

Factory of the **FUTURE**

An Expo on Industry 4.0

24 - 30 January 2019

Bangalore International Exhibition Centre
Bangalore, India

Concurrent with



Celebrating 50 years of IMTEX



Organiser



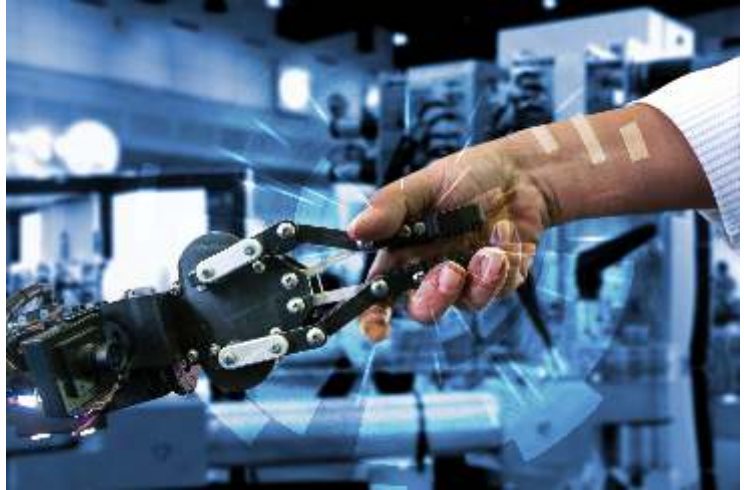
Indian Machine Tool
Manufacturers' Association



ABOUT INDUSTRY 4.0

Future Tech - Factory of the Future has an evolving definition, even different names. Some call it Smart Manufacturing, Industry 4.0, Cyber Manufacturing or the Digital Enterprise.

I4.0 is a collective term for new technologies that are disrupting traditional manufacturing landscape. I4.0 includes various technologies such as Smart Machines and CNC, 3D Printing, Sensors, Advanced robotics, CPS: Cyber-Physical Systems - Industry 4.0 motors and Actuators with Integrated Control and Communication Layer, Internet of Things (IoT), Simulation, Augmented Reality, Artificial Intelligence (AI), Big Data and Advanced Analytics.



Many Indian companies have started application of Industry 4.0.

For India, I4.0 has remarkable opportunities to advance manufacturing development, accelerating its application in manufacturing industries to improve cost, productivity, quality and flexibility.

OBJECTIVES

- To showcase Industry 4.0 as a stepping stone to attain globally competitive Smart Manufacturing and Future Factory levers and value drivers,
- To bring on one platform all facets of implementation of I4.0 i.e. Sensors, Analytics, Connectivity, Automation, Smart Machines, Digitisation, IOT, Quantum Computing, Cyber Security etc. through participation by suppliers and service providers,
- To encourage I.T Professionals and manufacturing engineers speak a common language and enhance Indian capability in the field,
- To offer "How to Implement" and 'Drawing a Roadmap' focus to industry visitors from MSME sector as well as large companies encourage startups and consultants.
- To offer a bridge to connect executive ambition for profitable growth and transformative action to achieve set goals.

Be a part of the manufacturing revolution in India

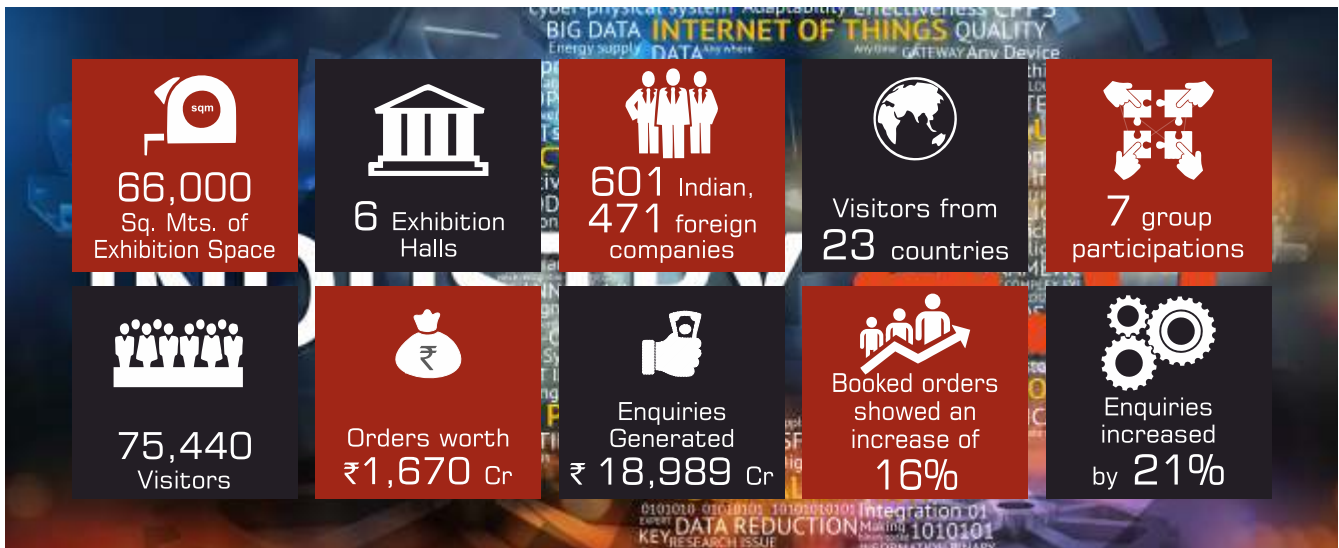
ABOUT IMTEX

IMTEX is the most recognised, largest manufacturing technology show in South and South East Asia. IMTEX will be celebrating its 50th year in 2019.

The strength of IMTEX lies with its global recognition, brand, ability to attract large number of business visitors, generating business worth millions of dollars and a great place to connect, learn and share knowledge for the manufacturing community.

IMTEX 2019 will showcase the complete range of metal-cutting machine tools. Concurrent show Tooltech 2019 - exhibition of cutting tools, tooling systems, machine tool accessories, metrology & CAD/CAM. A special pavilion on Additive Manufacturing will also be a part of IMTEX 2019.

IMTEX 2017 KEY HIGHLIGHTS



EXHIBITOR PROFILE: INDUSTRY 4.0 EXPO @ IMTEX 2019

Industry 4.0 Software

- CAD / CAM / CAE
- ERP
- VR and Simulation
- Artificial Intelligence
- Data Analytics & Cloud Services
- Communication - Blue Tooth, NFC, etc
- Internet and Data Security
- Industry 4.0 Integrated Systems
- Smart Factory Solutions

Industry 4.0 Hardware

- IoT Devices, Sensors and Components
- Data Acquisition Hardware
- Integrating Hardware
- Communication & Networking
- Guided Vehicles, Smart Handling & Transfer Systems
- Humanoid / Cooperating Robots (Cobots)
- Smart Mobile Terminals
- Vision Systems

The above list is not exhaustive. All companies offering any products / solutions / services in manufacturing IT, ERP, IoT, Industry 4.0 and related technologies are welcome.

Limited Space, Space offered on First-Come-First Basis

VISITOR PROFILE

Senior Personnel from all Manufacturing Sectors from India. Focus on CEOs', Plant Directors, CTOs, Production Engineering Professionals and Decision Makers.

HOW TO REGISTER

For booking your stall in Factory of the Future-Industry 4.0 Pavilion please visit www.imtex.in and download the application form and send the filled application with the participation fee to Mr. Deepak Patil, Email: deepak@imtma.in, Tel: +91 80 6624 6813

PARTICIPATION FEE

Space Charges, Please refer to Article III/11 in IMTEX 2019 Guidelines (Raw space: min. 30 Sqm., Shell Scheme: min. 15 Sqm.)

Category	Tariff - 15 to 30 Sqm.		Tariff - 31 Sqm. and above	
	Raw Space	Shell Scheme	Raw Space	Shell Scheme
IMTMA Member Companies (in ₹)	5,550/Sqm.	6,150/Sqm.	11,100/Sqm.	12,300/Sqm.
IMTMA Member Indian Companies (in ₹) [Applicable only to IMTMA members registered under Category IV), displaying Products manufactured in India]	4,950/Sqm.	5,550/Sqm.	9,900/Sqm.	11,100/Sqm.
Non-Member Indian Companies (in ₹)	6,550/Sqm.	7,100/Sqm.	13,100/Sqm.	14,200/Sqm.
Foreign Companies (in US\$)	165/Sqm.	185/Sqm.	330/Sqm.	365/Sqm.

*All other participation guidelines will be governed by IMTEX 2019 Guidelines

ABOUT IMTMA

IMTMA was formed in 1946 the year before India got its independence when 20 machine tool manufacturers joined hands to form an Association. Over a period of nearly seven decades it has grown in size to have around 500 members representing around 90% of the organized machine tool and allied equipment manufacturers as on date. Today, IMTMA is the apex body and single point of contact for the entire machine tool industry of India and plays a critical role in the development of the metalworking industry. A not-for-profit association, IMTMA's initiatives range from government advocacy to industry and export promotion, trade fairs and events, training and seminars, technology missions, publication of various industry and technical writings, structuring of regional councils, and development of clusters.

Head Office: Bangalore International Exhibition Centre (BIEC)

10th Mile, Tumkur Road, Madavara Post, Bangalore - 562 123

T: +91 80 6624 6600 | F: +91 80 6624 6661 | E: imtma@imtma.in

Regional Office (North): Plot No. 249 F, Phase IV,

Udyog Vihar Sector - 18, Gurgaon -122 015, Haryana, India

T: +91 124 4014 101 | F: +91 124 4014 108 | E: imtma.ggn@imtma.in

Regional Office (West): 12/5, D-1 Block, MIDC, Chinchwad, Pune -411 019

T: +91 7066030531 / 532 | E: imtma.pune@imtma.in



Indian Machine Tool Manufacturers' Association (IMTMA)

Application date

--	--	--	--	--	--	--	--	--	--	--	--	--	--	--	--	--	--	--	--

(to be returned by 30 June 2018)

Membership No.

Category

We apply for participation at Factory of the Future 2019 in IMTEX 2019 / Tooltech 2019. We have read the guidelines, rules and regulations, and under take to abide by them.

Company

Address

City.....Pin/Zip.....State.....Country.....

Phone.....Fax.....

Email.....Website

CEO's Name.....Email.....

Phone (Direct)..... Mobile.....

Contact Person for Exhibition.....Designation.....

Email.....Phone (Direct)..... Mobile.....

Bangalore office / India Agent

Contact Person

Address

Phone.....Fax.....Mobile..... Email.....

Short Name of the Company

Max. 15 Characters for listing in Exhibition Catalogue

--	--	--	--	--	--	--	--	--	--	--	--	--	--	--	--	--	--	--	--

We are Manufacturers Sales/Trading Company Service Company MNC Company Others

* (please enter your GST Number :

--	--	--	--	--	--	--	--	--	--	--	--	--	--	--	--	--	--	--	--

**Participation Charges Shell Scheme
min. 15 sqm & Raw Space min. 30 sqm.**

Tariff 15 to 30 sqm.

Tariff 31 sqm. and above

Category

Raw Space

Shell Scheme

Raw Space

Shell Scheme

IMTMA Member Companies (in ₹)
(Members as on 31 March 2017)

5,550

6,150

11,100

12,300

x sqm

IMTMA Member Companies (in ₹)
[Applicable only to IMTMA members registered under
Category IV], displaying Products manufactured in India]

4,950

5,550

9,900

11,100

x sqm

Non-Member Indian Companies (in ₹)

6,550

7,100

13,100

14,200

x sqm

Foreign Companies (in US\$)

165

185

330

365

x sqm

2. Open Side charges 20% of space charges 30% of space charges 50% of space charges

Total Space Charges (Total of 1 to 2)

3. Electric Power

a. Indian exhibits (Rs. 3,300/kw) x Single Phase kw + Three phase kw = Total kw

b. Foreign exhibits (US\$ 82/kw) x Single Phase kw + Three phase kw = Total kw

4. Compressed Air

a. Indian exhibits (Rs. 22,450/connection) x connection(s) volume max. 12 cfm/connection

b. Foreign exhibits (US\$ 550/connection) x connection(s) Pressure (Max 6 bar)

5. Water

a. Indian exhibits (Rs. 12,100/connection) x connection(s)

b. Foreign exhibits (US\$ 300/connection) x connection(s)

Total Additional Charges (Total of 3 to 5)

6. Net Amount Payable (Total Space Charges + Total Additional Charges [Total of 1 to 5])

7. GST [18% of net amount payable (8)]

8. Security Deposit

15-50 sqm. (Rs. 25,000/US\$ 650) 51-100 sqm. (Rs. 50,000/US\$ 1,300) 101 sqm/above (Rs. 75,000/US\$ 1,950)

Total Amount payable (Net amount payable + GST + Security Deposit) [Total of 6 to 8]

Advance amount payable [60% of Total Space Charges +100% Security Deposit [deadline 30 June 2018]

For payment details: Please refer page no. 6 of Guidelines & Application Form (deadline 30 June 2018)

* Invoice will be raised as per application name and address. It cannot be changed at any stage.

Other Indian & Foreign Sub-Exhibitors displaying products in our stand (use additional sheets if necessary)

Company	City	Country
1
2
3
4
5
6

Details of Indian Exhibits are mandatory (use additional sheets if necessary)

Sl. No.	General Description of Machines/Product	Model No.	Quantity	Length (m)	Width (m)	Height (m)	Weight (Kgs.)	Value (Rs/US\$ million)	Power (Kw)	Manufacturer Company/City/Country
	Total									

Details of Foreign Exhibits are mandatory (use additional sheets if necessary)

Sl. No.	General Description of Machines/Product	Model No.	Quantity	Length (m)	Width (m)	Height (m)	Weight (Kgs.)	Value (Rs/US\$ million)	Power (Kw)	Manufacturer Company/City/Country
	Total									

Notes:

1. Please enclose illustrated catalogues/leaflets of all exhibits.
2. It is essential to mention power requirement in terms of connected load of individual exhibits.
3. Give Exhibit code numbers as per the Product Index for all the exhibits individually for classifications in Exhibition Catalogue.
4. Exhibits other than mentioned above will not be allowed for display.
5. Keep a copy of the Application Form for your future reference and use.

Other Special Requirements

.....

Enclosures with Application

1. Product catalogues, Excise registration certificates if applicable
 2. Indian Rupee payments:
by Demand Draft/payable at par cheque
in favour of Indian Machine Tool Manufacturers' Association payable at Bangalore
 3. US\$ payments by SWIFT transfer only
J.P Morgan Chase Bank, New York Branch
Swift Code: CHASUS33
Chips ABA No. : 0002
Favouring: HDFC Bank, Mumbai
A/C No. 001-1-406717
Beneficiary: Indian Machine Tool Manufacturers' Association
HDFC Bank, Bangalore, Malleswaram Branch
A/C No. 00412430000403
Swift Code: HDFCINBB
- Purpose: Participation charges for IMTEX 2019 / Tooltech 2019
Note: Please enclose a copy of your US\$ remittance advice with this Application Form

For foreign Exhibitors Only
Please provide bank account details with SWIFT code for post-show refund for security deposit

.....
.....
.....
.....
.....

Approval Note of Organisation office

Company stamp and authorised signature

Place and date.....